

State of Wyoming Corner Record

(In compliance with the *CORNER PERPETUATION AND FILING ACT*, Wyoming Statutes, 1997, Section 33-29-140, et seq., and the Rules and Regulations of the Board of Registration for Professional Engineers and Professional Land Surveyors)

Reverse side of this form may be used if more space is needed.

Record of original survey and citation of source of historical information (if corner is lost or obliterated). Description of corner monumentation evidence found and/or monument and accessories established to perpetuate the location of this corner. Sketch of relative location of monument, accessories, and reference points with course and distance to adjacent corner(s) (if determined in this survey). Method and rationale for reestablishment of lost or obliterated corner.

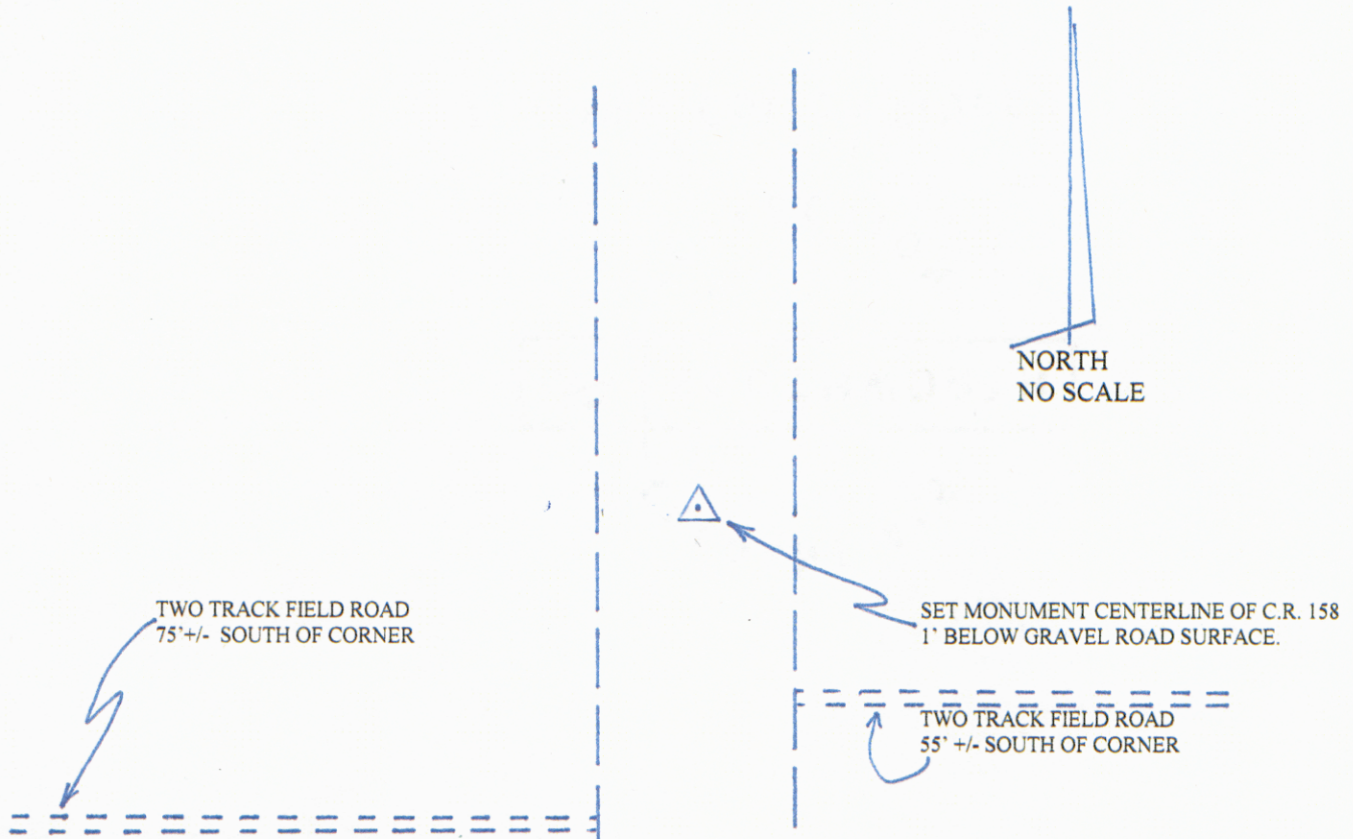
Section Corner: 10, 11, 14 & 15, T12N, R61W, 6th PM, Laramie County, Wyoming.

GLO record: 15"x12"x3" Sand Stone.

Found: Nothing found.

Set: 30" No.5 rebar w/2 1/2" dia. Aluminum Survey Cap, stamped PLS 4828 and proper identification.

This corner was reestablished by double proportionate positioning in the following manner: For longitudinal position, centerline of Laramie County Road No. 158. Per the introductory comments of the Deputy Surveyor for the 1911 GLO resurvey of the WY/COLO State Line "I found no original interior corners on the lines, except those noted in the following field notes...", and descriptions and survey notes of the County Engineers for said County Roads (County Road Bk.2, Pg20; County Eng. T.H. Baldwin Bk. 33, Pg. 34-41), describing the centerline of the roads on the Section lines, it is this Surveyors opinion that the centerline of said roads are the best available evidence of the original section line and corner positions. In addition, measured distances to evidence in both the easterly and westerly directions were consistently long, not necessarily proportional to one another, but long.; For latitudinal position I used single proportionate distribution of measured distances between the found 1911 GLO Closing Corner for Sec. 21/22 on the WYO/COLO State Line (found disturbed and re-set this survey), and the reestablished NW Corner of Section 10, per State of Wyoming Corner Record filed by John S. Lambert, WY PLS 4522, dated 2/21/11, and accepted for this survey.



SEE MAP ON BACK OF THIS PAGE FOR TIES TO SURROUNDING CORNERS.

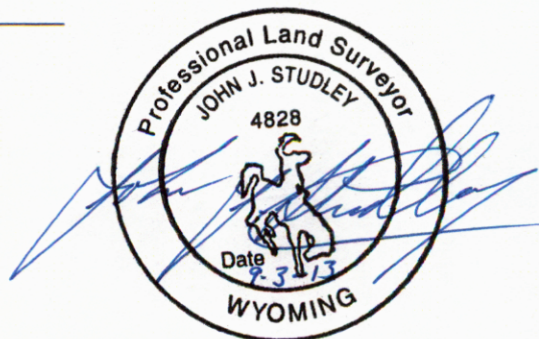
Date of Field Work: JULY 2013 Office Reference: _____

CROSS INDEX DIAGRAM

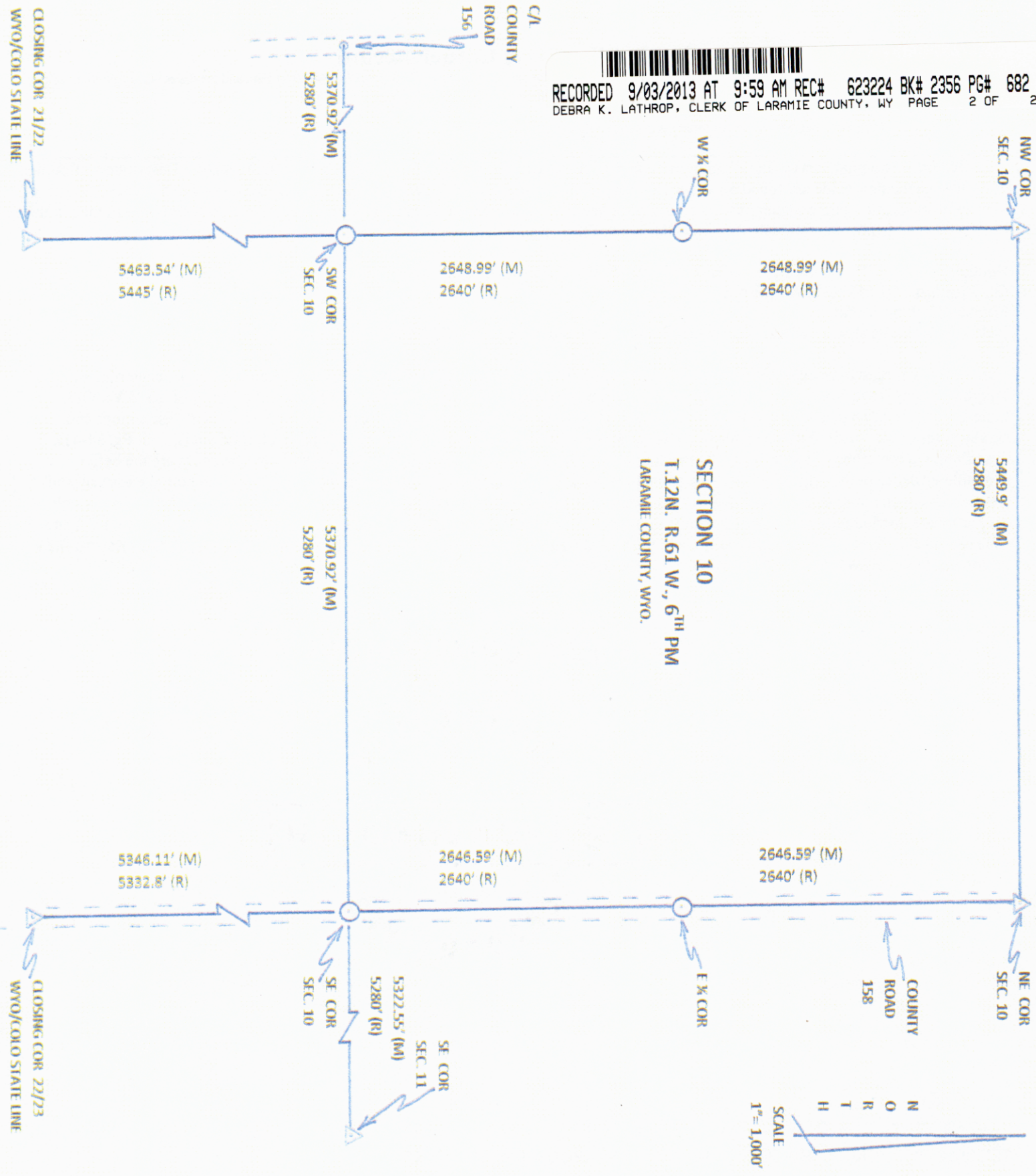
| | | | | | | | | | | | | | | | | | | | | | | | | | |
|---|---|---|---|----|----|----|---|---|----|----|----|----|----|----|----|----|----|----|----|----|----|----|----|----|----|
| 1 | 2 | 3 | 4 | 5 | 6 | 7 | 8 | 9 | 10 | 11 | 12 | 13 | 14 | 15 | 16 | 17 | 18 | 19 | 20 | 21 | 22 | 23 | 24 | 25 | |
| A | | | | | | | | | | | | | | | | | | | | | | | | | |
| B | | | | | | | | | | | | | | | | | | | | | | | | | |
| C | 6 | | | | | | | | | | | | | | | | | | | | | | | | |
| D | | 5 | | | | | | | | | | | | | | | | | | | | | | | |
| E | | | 4 | | | | | | | | | | | | | | | | | | | | | | |
| F | | | | 3 | | | | | | | | | | | | | | | | | | | | | |
| G | | | | | 2 | | | | | | | | | | | | | | | | | | | | |
| H | | | | | | 1 | | | | | | | | | | | | | | | | | | | |
| I | | | | | | | | | | | | | | | | | | | | | | | | | |
| J | | | | | | | | | | | | | | | | | | | | | | | | | |
| K | | | | | | | | | | | | | | | | | | | | | | | | | |
| L | | | | | | | | | | | | | | | | | | | | | | | | | |
| M | | | | | | | | | | | | | | | | | | | | | | | | | |
| N | | | | | | | | | | | | | | | | | | | | | | | | | |
| O | | | | | | | | | | | | | | | | | | | | | | | | | |
| P | | | | | | | | | | | | | | | | | | | | | | | | | |
| Q | 7 | | | | | | | | | | | | | | | | | | | | | | | | |
| R | | 8 | | | | | | | | | | | | | | | | | | | | | | | |
| S | | | 9 | | | | | | | | | | | | | | | | | | | | | | |
| T | | | | 10 | | | | | | | | | | | | | | | | | | | | | |
| U | | | | | 11 | | | | | | | | | | | | | | | | | | | | |
| V | | | | | | 12 | | | | | | | | | | | | | | | | | | | |
| W | | | | | | | | | | | | | | | | | | | | | | | | | |
| X | | | | | | | | | | | | | | | | | | | | | | | | | |
| Y | | | | | | | | | | | | | | | | | | | | | | | | | |
| Z | | | | | | | | | | | | | | | | | | | | | | | | | |
| | 1 | 2 | 3 | 4 | 5 | 6 | 7 | 8 | 9 | 10 | 11 | 12 | 13 | 14 | 15 | 16 | 17 | 18 | 19 | 20 | 21 | 22 | 23 | 24 | 25 |

Land Surveyor / Firm / Address
Studley Land Surveying, PC
John J. Studley, PLS No. 4828
615 West Dale Blvd.
Chevenne, WY 82009
 Telephone: 307-287-4755

This corner record was prepared by me or under my direction and supervision.
 SEAL & SIGNATURE



Corner Name: Section Corner common to Sections: 10, 11, 14 & 15 T 12 N R 61 W ; 6th P.M. Cross-Index No.: J-17
 SBRPEPLS/PLSW: March 1994; PLSW January 1998



MONUMENTS FOUND AND ACCEPTED FOR THIS SURVEY.

- △ SURVEY.
- MONUMENTS SET THIS SURVEY -- SET A 30" NO.5 REBAR WITH 2 1/2" ALUMINUM SURVEY CAP, BY PLS NO. 4828, PROPERLY INSCRIBED WITH IDENTIFICATION.

SE COR. SEC. 10, T.12N., R.61W., 6TH P.M.

This corner was reestablished by double proportionate positioning in the following manner: For longitudinal position, centerline of Laramie County Road No. 158. Per the introductory comments of the Deputy Surveyor for the 1911 GLO resurvey of the WY/COLO State Line "I found no original interior corners on the lines, except those noted in the following field notes...," and descriptions and survey notes of the County Engineers for said County Roads (County Road Bk.2, Pg20; County Eng. T.H. Baldwin Bk. 33, Pg. 34-41), describing the centerline of the roads on the Section lines, it is this Surveyors opinion that the centerline of said roads are the best available evidence of the original section line and corner positions. In addition, measured distances to evidence in both the easterly and westerly directions were consistently long, not necessarily proportional to one another, but long.; For latitudinal position I used single proportionate distribution of measured distances between the found 1911 GLO Closing Corner for Sec. 21/22 on the WYO/COLO State Line (found disturbed and re-set this survey), and the reestablished NW Corner of Section 10, per State of Wyoming Corner Record filed by John S. Lambert, WY PLS 4522, dated 2/21/11, and accepted for this survey.